

# LATE BLIGHT OF POTATO & TOMATO



Tomato leaves

## Primary Hosts

- Potato
- Tomato

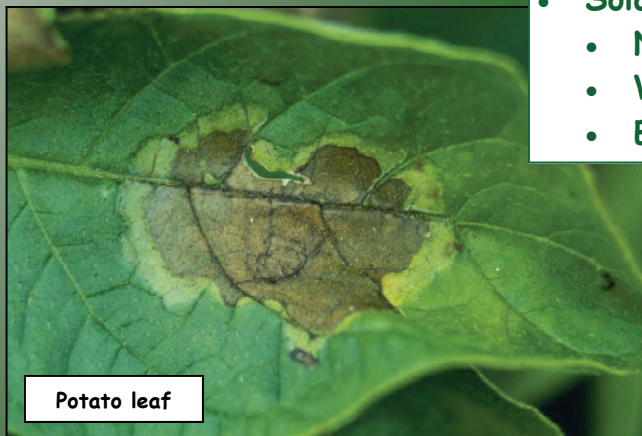
## Secondary Hosts:

- Eggplant
- Pepper
- Petunia
- Solanaceous weeds
  - Nightshade
  - Wild tomato
  - Etc.

Dark, water-soaked lesions (spot)

Lesions are not contained by leaf veins

Lesions may have a yellow edge



Potato leaf

Lesions become brown & brittle within a couple of days

Disease develops rapidly under warm & wet/humid conditions

Plants may foliage die back rapidly



Tomato plant



Potato foliage

Lesions may also develop on stems, tomato fruit or potato tubers

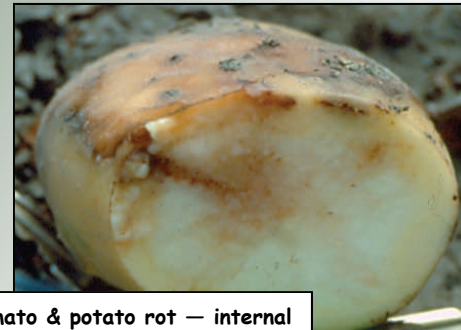
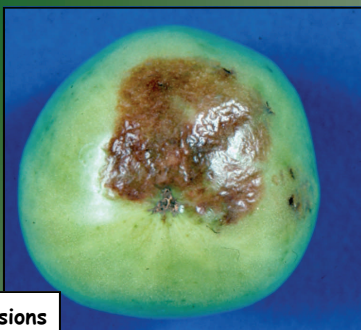
Tomato fruit & potato tuber rot may have a reddish-brown lesions

Disease may spread from diseased to healthy tomato fruit & potato tubers in storage and between potato seed pieces

Fruit & tuber rot penetrates deeply



Tomato fruit — external lesions



Tomato & potato rot — internal

For more information on the management of late blight, visit [www.agriculture.alberta.ca](http://www.agriculture.alberta.ca) — FAQs